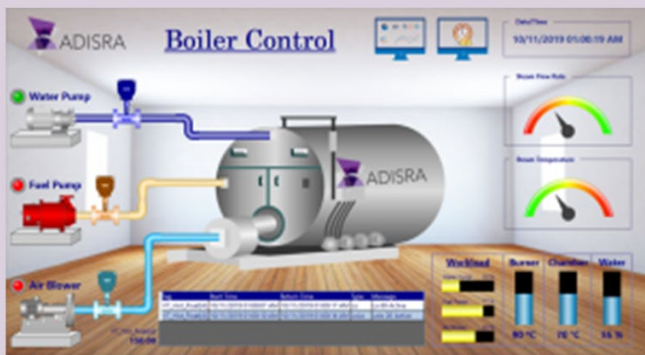
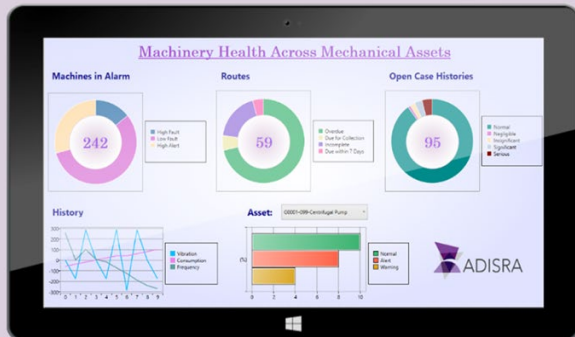


# All you need is ADISRA SmartView™ and a vision for your business



ADISRA SmartView™ is a powerful software for developing Human Machine Interface (HMI), Supervisory Control and Data Acquisition (SCADA), Overall Equipment Efficiency (OEE), and Industrial Internet of Things (IIoT) applications.

Aware, Diverse, Integrated, Self-Regulated, Adaptive

## Save Time

All aspects of industrial automation are digitizing. ADISRA SmartView™ provides a simple, easy-to-use development environment to create, test and connect HMI, SCADA, OEE and IIoT applications to your processes and to the Internet.

## Save Money

Develop once and deploy on headless devices. Whether it is machine-oriented visualization, powerful SCADA applications, Plant Intelligence or more. Your imagination is the only limitation.

## Comprehensive Software Portfolio

Display and access real-time, dynamic, and animated graphic screens, charts, trends, recipes, and reports on desktop, industrial panels, web browsers and edge devices.

## Features Overview

- Integrated development environment with all the features to build HMI, SCADA, OEE and IIoT applications.
- Powerful visualization tools that include thousands of built-in symbols from Software Toolbox's Symbol Factory. ADISRA SmartView enables you to gather data from various systems, aggregate, evaluate the state and visualize the result
- Seamless connectivity with devices, using the most popular industrial protocols as well as standards-based protocols such as MQTT, OPC UA, OPC DA, OPC HDA.
- Easy deployment to HMI panels, control rooms, edge devices, cloud platforms, virtualized servers, Web-browsers and mobile devices.

# ADISRA SmartView™ Features

|                                       |  |
|---------------------------------------|--|
| <b>Alarms</b>                         | Create, edit, and configure online and historical alarms.  |
| <b>Animation</b>                      | Easily configure graphics. Rotate and re-position dynamically. Fill bar graphs with color, resize objects, or adjust the scale of objects. Place commands, hyperlinks, or text data links within an object.  |
| <b>Communications</b>                 | Easy-to-configure and industry standard OPC UA client, OPC DA client, OPC HAD client, OPC DA Server, and OPC UA Server.  |
| <b>Database</b>                       | Built-in internal tags (variables) database with Boolean, Integer, Float, String and Date/Time and custom DataTypes (classes). Supports multi-dimensional and dynamic tags. In addition, ADISRA SmartView can connect to any external SQL database, such as MySQL, MS SQL, Oracle, or OSIsoft Pi Historian, and can store data on the cloud (Amazon Web Services, MicroSoft Azure).  |
| <b>Drivers</b>                        | Contains built-in drivers for Siemens, General Electric, Modbus, Rockwell Automation/Allen-Bradley, SNMP, BACnet, and MQTT.  |
| <b>Events</b>                         | Events provide traceability for operators initiating commands or tracking internal system activity. Events can log any change in the tag values, such as security system and screen changes.   |
| <b>Graphics and Design Tools</b>      | Create visually powerful screens to meet any application requirements. Built-in graphics and design tools for basic objects (bitmap, label, buttons, combo boxes, check boxes, etc.), geometric objects (ellipse, polyline, rectangle, etc.), interface objects (groupbox tabs, menus, etc.), advance objects (.Net Controls, multi-tag viewer, etc.) charts (bar, scatter, line, pie, etc.), and a built-in symbol library with over 4,000 symbols. |
| <b>.NET</b>                           | Incorporate third party .NET controls to enhance your applications, within screens, web browsers, media players, vision systems or other tools that support .NET interface standards.  |
| <b>Recipes</b>                        | Recipes are a list of operations, such as automated parts parameters or production qualities, which can be triggered by events. Load and save recipes in text or XML format. In addition, "Smart" recipe type allows users to load and save values within a text document or type of form. Autofill can load values into document or form dynamically.   |
| <b>Redundancy</b>                     | For critical applications where data is vital, ADISRA SmartView provides native redundancy. In a failover situation, the client is automatically redirected to the new server, transparently to the users.   |
| <b>Remote Client &amp; Web Client</b> | Visualize applications locally, remotely, and in HTML5 browsers, such as Chrome, Edge, Firefox, Internet Explorer, and Opera.  |
| <b>Reports</b>                        | Create, edit, configure, and save reports in PDF, DOCx, HTML, RTF, TXT and XPS file formats. Reports can include charts, tables, tag values, and other format settings.  |
| <b>Scheduler</b>                      | Schedule custom tag changes (or run scripts and expressions) on a specific date/ time, repeat on a specific period, interval, or frequency, or when a tag is triggered (or in a certain condition). You can set schedules to publish reports at a specific time or start a recipe when a tag is triggered.   |
| <b>Scripting</b>                      | Write C# scripts that run as a function or are triggered by conditions or tags. Using standard C# language, you can take advantage of widely available resources and incorporate them into our SCADA, HMI, OEE, or IIoT application.   |
| <b>Security System</b>                | ADISRA SmartView uses Role Based Access Control (RBAC) to allow you to restrict users based on their role within the organization. In addition, you can use project passwords to protect the intellectual property of your applications. This protects against unauthorized viewing or editing of your customer applications.  |
| <b>SNMP</b>                           | Simple Network Management Protocol (SNMP) is a standard for querying and monitoring the hardware and software on a network. With ADISRA SmartView, you can develop IIoT applications to monitor the health of devices on the network. The SNMP driver also allows applications to be integrated with the most popular IT operation software, such as HP OpenView, IBM Tivoli, and CA Unicenter.  |
| <b>Standards</b>                      | ADISRA SmartView adheres to common industry standards, such as HTML5, .NET, OPC, SQL, XML, and SNMP.   |
| <b>Troubleshooting</b>                | Create ADISRA SmartView provides simple debugging tools for easy troubleshooting. For example, the engineering log displays messages from the engineering environment, such as problems when saving an application or setting fields in the application. A runtime log provides messages generated during project execution. Messages may be errors or warnings. The Search field helps you find tag results in your application.                    |